

Morphology and sedimentary pattern of the Southern Ionian Calabrian margin (South Italy)

Giovanni GABBIANELLI and Gianni BIASINI

Dipartimento Scienze Geologiche, BOLOGNA (Italy)

The neotectonic evolution of the Ionian Calabrian margin, external side of the southern Apennines mountain range (Calabro-Peloritanian Arc), is marked by important fault systems transverse or parallel to the chain. They were active, with extensional mechanism, during the Late Quaternary and delimit a regional horst-graben style, respectively characterized by high uplift and subsidence rates (ERGENZINGER, 1978; GHISETTI, 1979). Marine geological and geophysical surveys (high resolution seismic reflection profiles and cores) in the area between *Le Castella* and *Cape Spartivento*, pointed out that the morphology of the shelf-slope system of the margin and its Late Pleistocene-Holocene depositional evolution are mainly controlled by active tectonics, extension of the onland one, along with a remarkable fluvial input and glacioeustatic sea level fluctuations.

Morphological features

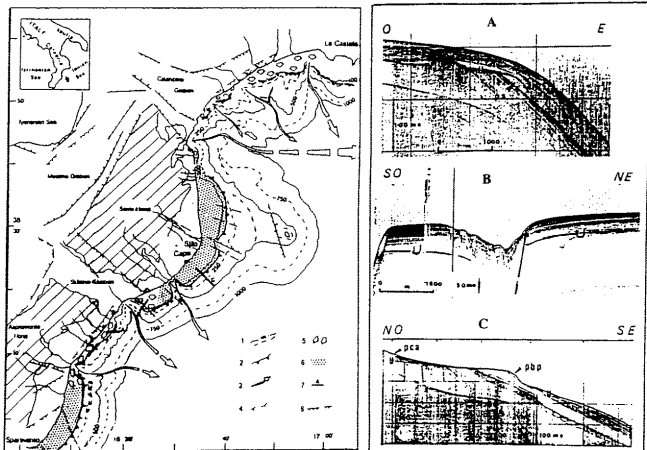
On the whole, the area shows a narrow shelf and a steep slope, deeply cut by several active canyons, which are aligned with the fluvial mouths. The shelf is only 0.4 km wide, irregular and discontinuous due to the canyon erosion in correspondence of the *Catanzaro* and *Siderno* grabens. Around *Le Castella*, *Cape Stilo* and *Cape Spartivento* it is almost continuous with average width around 6.5 km. The shelf break is, on average, at 115-120 m over the whole area. The slope deepens continuously and without significant breaks (average dip around 4°-6°) in the whole southern sector of the margin. In front of *Cape Stilo* its continuity is broken by wide structural high, which constitutes the seaward side of a small intraslope basin. In the whole northern sector (*Gulf of Squillace*) it is instead composed by ridges, narrow valleys and canyons, tributaries of the main longitudinal Squillace canyon, which mainly trends NNW-SSE.

Gravity deformations of different kind and size (creep, debris, slump) are diffused along the entire slope and the most pervasive of these events are probably triggered by the high seismicity of the area.

Depositional setting

The shallow seismic records (3.5 kHz S.B.P., Uniboom and Sparkarray 1000-3000 J) across the shelf-slope system within the study area show a superposition of seaward progradational units. The youngest of these overlays a prominent shelf-wide erosional unconformity, formed during the last glacio-eustatic sea level fluctuations (about 18 ka B.P.; BORSETTI *et al.* 1989) and truncating former middle late Pleistocene progradational units, still under investigation (GABBIANELLI, *in prep.*). In the zone of graben areas with a narrow shelf, this unit is represented by a upbuilt and outbuilt of accretionary shelf-slope sequence, which reaches thicknesses around 30 ms. A buried sedimentary prism, probably connected to the low stand sea-level phase, is some times detectable within the sequence in correspondence of the shelf break. In these areas the erosive unconformity reaches maximum depths around 170-180 ms and, in particular, it is sharply cut and lowered in correspondence of the fault system (*Rocella Ionica-Marina di Nicotera*) controlling the northern side of the Siderno graben. On the other way around, in areas with wider shelf the youngest depositional sequence is marked by a modern sediment wedge that thins near the shelf edge and reaches landward a maximum thickness of about 25-30 ms. A small sedimentary prism is continuously developed along the whole shelf edge in front of *Cape Stilo* and *Cape Spartivento* while the shelf wide erosive unconformity is at an average depth of about 140 ms.

Legend - Morpho-structural sketch map of the Ionian Calabrian margin (data on land from GHISETTI, 1979, modified) and seismic sections across the shelf-upper slope system. 1. isobath in meters; 2. shelf break; 3. main canyons; 4. main breaks; 5. draped sediments and buried wedge areas; 6. shelf areas with coastal aggradational wedge and sedimentary shelf break wedge; 7. location of profiles: U = erosional unconformity, ps = buried sedimentary wedge, pca = modern sedimentary wedge, pbp = small sedimentary prism at the shelf break; 8. faults.



REFERENCES

- BORSETTI A.M., CATI F. and GABBIANELLI G., 1989. - Crociera IT/88, Risultati preliminari. *Giorn. Geol.*, 51/1, 179-200.
 GABBIANELLI G. (*in prep.*). - Tectonic control in the Pleistocene sedimentary evolution of the Ionian Calabrian Margin.
 GHISETTI F. 1979. - Evoluzione neotettonica dei principali sistemi di faglie della Calabria Centrale. *Boll. Soc. Geol. It.* 98, 387-430.
 ERGENZINGER P., GORLER K., IBBEKEN H., OBENAU P. and RUMHOR J., 1978. - Calabrian Arc and Ionian Sea: vertical movements, erosional and sedimentary balance. *In.*: Closs *et al.*, Eds. "Alps, Apennines, Hellenides", 359-373. Stuttgart.