

INNER HARBOUR WRECKS OF SINOP

D. Sahin ^{1*}, Y. Tarakçı ¹, Z. Karsli ¹, B. Eyüboğlu ² and Ö. S. Aslan ¹
¹ Sinop University Underwater Technology Programme - dilek_shn@hotmail.com
² Sinop University Fisheries Programme

Abstract

After the research lasting since 1985 in Sinop Inner Harbour, three wooden battle ships ((Nesim-i Zafer, Demirciköy village, 37 meters), Navek-î Bahri (DSI resort, 14 meters) and Avnillah II (mobil beach, 23 meters)), a tomb and a Byzantine wreck loaded with tiles belonging to Crimea War started with Sinop Blitz on 30th November 1853 have been identified.

Keywords: *Swath mapping, Black Sea*

Sinop is a very rich region of wrecks for having thousand years of history and Maritime traffic. Because it is the only natural harbour in Anatolian Coast, that makes it an area to be reached in heavy weather conditions.

Foundation date of Sinop City which used to be an important site in Hittite Era is still unknown [1]. It is stated that Sinop could develop and became the most significant city of Black Sea Coast, just because it was on the edge of the road connecting Black Sea to Hattusha [1].

During Ottoman Empire, Sinop was used as a naval base as well as Gallipoli [1].

Sinop Blitz subjected by Russian Navy on 30th November 1853 caused the Crimea War between Russia and Ottoman Empire with its allies.

Method

The wrecks were determined by luck during the tangled fishnets were being scanned by divers and also sportive and trading dives. The research process was started by diver Yasar Tarakçı in 1985 and has lasted till today (fig. 1).

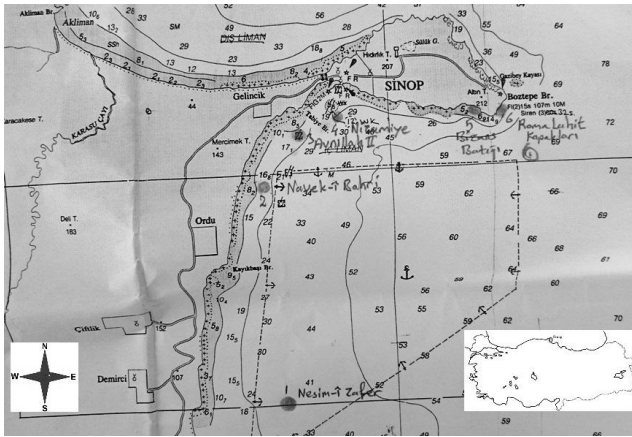


Fig. 1. Location of wrecks of Sinop

Discussion and Suggestions

After the obtained findings, it is not possible to compare the determined wrecks with another wreck, because they are first record and there are not any archaeological studies on them.

In the future studies, it is suggested to conduct scientific and archaeological research on the determined wrecks and turn them into national park open to scuba diving tourism.

Conclusion

After the research, an ancient tomb (Adabasi site), a Byzantine wreck loaded with tiles, (Adabasi Site), three wooden battle ships (Nesim-i Zafer, Demirciköy village, 37 meters), Navek-î Bahri (DSI resort, 14 meters) and Avnillah II (mobil beach, 23 meters) belonging to Russian Blitz on 30th November 1853 were identified (fig. 2).

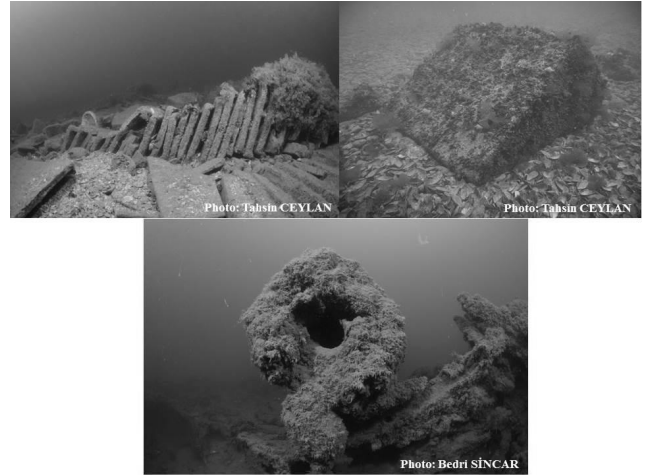


Fig. 2. Inner harbour wrecks of Sinop

During Sinop Blitz, an important part of other ships sank, burned and succumbed to the corrosive effects of sea. Also sunken wooden battle ships washed ashore and are known to have been removed and used as fuel.

References

1 - [Http://www.sinopmuzesi.gov.tr/TR,78304/sinopuntarihcesi.html](http://www.sinopmuzesi.gov.tr/TR,78304/sinopuntarihcesi.html)