

PLATYCEPHALIDAE

flatheads

Papilloculiceps longiceps

Ehrenberg in Valenciennes, 1829

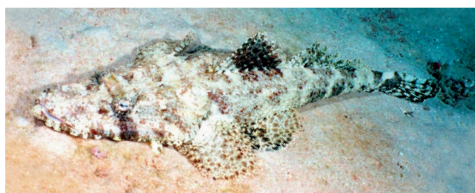


Photo: Jack Madejski

HABITAT AND ECOLOGY

Inhabits sandy bottom usually near coral (in its original area) and rocky substrate to depth of 20 m. Most of the time buried in the sand, in order to ambush other organisms. Feeds mainly on crustacean and fish. Eggs and larvae pelagic.

DISTRIBUTION

Mediterranean record: only a single record in 1986 from Israel (Golani and Ben-Tuvia, 1990).

Original distribution: Red Sea, eastern Africa south to Durban and Madagascar to the Gulf of Oman.

KEY REFERENCE

- Golani D. and Ben-Tuvia A. 1990. Two Red Sea flatheads (Platycephalidae) immigrants in the Mediterranean. *Cybium*, 14: 57-61.

PLATYCEPHALIDAE

flatheads

Sorsogona prionota

Sauvage, 1873



Photo: David Darom

HABITAT AND ECOLOGY

Benthic species, inhabiting sandy bottoms to depths of 20 m. Spends most of the day buried in the sand, waiting for prey. Feeds on crustaceans and small fish. In the Red Sea, young specimens (5-10 cm) occupy very shallow depths (0.5-1.5 m). Adults spend the day in deeper waters, entering shallow sectors at night.

DISTRIBUTION

Mediterranean record: a single record from 1947 was reported from Israel (Golani and Ben-Tuvia, 1990).

Original distribution: Red Sea and western Indian Ocean from Mozambique to the Arabian Gulf.

KEY REFERENCE

- Golani D. and Ben-Tuvia A. 1990. Two Red Sea flatheads (Platycephalidae) immigrants in the Mediterranean. *Cybium*, 14: 57-61.