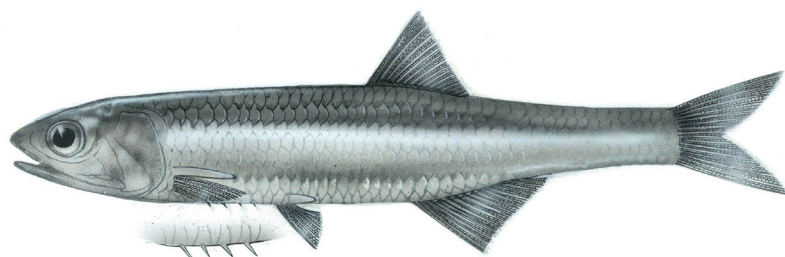


ENGRAULIDAE

anchovies

Stolephorus indicus

(Van Hasselt, 1823)

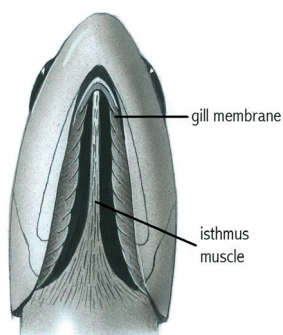


Drawing : Tuvia Kurz

Relevant synonyms: None

Misidentification: None

Meristic formula: D, 15-17; A, 19-21; P, 13-16; V, 7; LL



Stolephorus insularis and indicus

SHORT DESCRIPTION

Body slender, round in cross-section, becoming slightly compressed in the belly. Pointed snout with upper jaw much longer than lower jaw. 2-6 (usually 3-5) pre-pelvic scutes. A single dorsal fin at the middle of the body. Anal fin origin slightly behind dorsal fin origin. Forked caudal fin. Small pectoral fin, originated at the vertical line of posterior edge of the operculum. Origin of pelvic fin in front of dorsal Fin.

color: Body light grey to almost transparent with a clear silver stripe on the flank.

common size: 7-12 cm (max. 15 cm)

DISTINGUISHING CHARACTERISTICS

- *Stolephorus insularis*: 4-8 (usually 6-7) needle-like scutes on the belly, head length 3.7-4.1 times in SL.
- *Encrasicholina gloria*: Isthmus muscle not reaching forward to gill membrane.
- *Engraulis encrasicolus*: no scutes on the belly.

Clupeidae: terminal mouth.

BIOLOGY / ECOLOGY

Inshore-pelagic schooling species. Feeds on zooplankton. Reaches sexual maturity at 9 cm. Oval eggs with small knob at one pole.

habitat: coastal species that enters estuaries.

DISTRIBUTION

Worldwide: wide Indo-Pacific distribution.

Mediterranean: Israel (Fricke *et al.*, 2015).

MODE OF INTRODUCTION

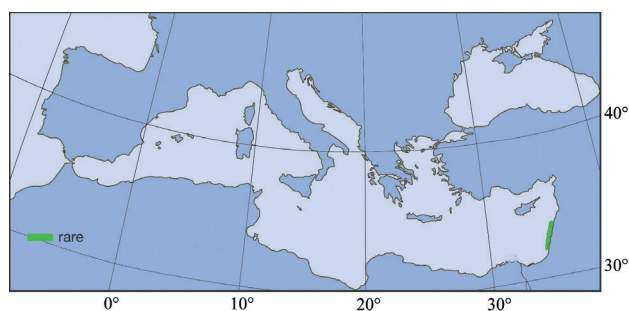
Via the Suez Canal.

ESTABLISHMENT SUCCESS

To date, recorded only from Israel. Probably found also in adjacent countries but may have been overlooked in the Mediterranean, due to its external resemblance to other engraulids in the region.

IMPORTANCE TO HUMANS

Unknown.



1st Med. record
Israel, 2015

KEY REFERENCES

- Fricke R., D. Golani and B. Appelbaum-Golani 2015. First record of the Indian anchovy *Stolephorus indicus* (van Hasselt, 1823) (Clupeiformes: Engraulidae) in the Mediterranean Sea. *Marine Biodiversity Records* 4(4): 293-297.
- Whitehead P.J.P. 1985. Clupeoid fishes of the world (suborder Clupeoiei) Part 2 Engraulidae- An annotated and illustrated catalogue of the Herrings, Sardines, Pilchard, Sprats, Shads, Anchovies and Wolf-herrings. *FAO Species Catalogue*. FAO, UN, Rome. VIII+305 pp.